



Web: www.anbobio.com
www.dijibio.com
 Order: order@dijibio.com
 Tel: (86) 519 8805 0026

EZH1 Antibody [#C11435]

Catalog Number: C11435

Concentration: 1mg/ml

Swiss-Prot No.: Q92800

Other Names: ENX-1, Enhancer of zeste homolog 2

Storage/Stability: Store at -20°C/1 year

Form of Antibody: Rabbit IgG in phosphate buffered saline (without Mg²⁺ and Ca²⁺), pH 7.4, 150mM NaCl, 0.02% sodium azide and 50% glycerol.

Immunogen: The antiserum was produced against synthesized peptide derived from internal of human EZH1.

Purification: The antibody was affinity-purified from

rabbit antiserum by affinity-chromatography using epitope-specific immunogen.

Specificity: EZH1 antibody detects endogenous levels of total EZH1 protein.

Reactivity: Human, Mouse

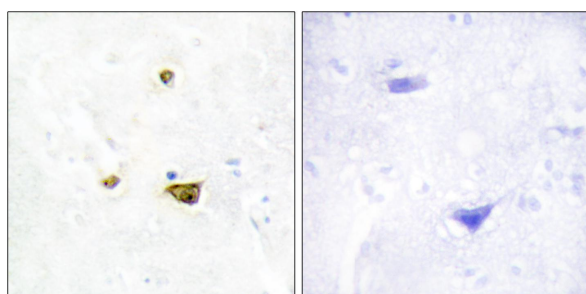
Applications: WB: 1:500~1:3000 IHC: 1:50~1:100
 ELISA: 1:5000

References:

Abel K.J., Genomics 37:161-171(1996).

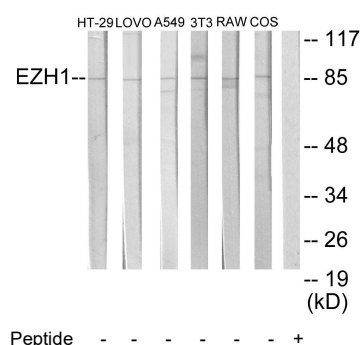
Ogawa M., Biochim. Biophys. Acta 1395:151-158(1998).

Nagase T., DNA Res. 4:141-150(1997).



Peptide - +

Immunohistochemistry analysis of paraffin-embedded human brain tissue using EZH1 antibody.



Western blot analysis of extracts from HT-29 cells, LOVO cells, A549 cells, NIH-3T3 cells, RAW264.7 cells and COS-7 cells, using EZH1 antibody.