



**Web:** [www.anbobio.com](http://www.anbobio.com)  
[www.dijibio.com](http://www.dijibio.com)  
**Order:** [order@dijibio.com](mailto:order@dijibio.com)  
**Tel:** (86) 519 8805 0026

## COPS2 Antibody [#C10768]

**Catalog Number:** C10768

**Concentration:** 1mg/ml

**Swiss-Prot No.:** P61201

**Other Names:** ALIEN; COP9 constitutive photomorphogenic homolog subunit 2; COP9 constitutive photomorphogenic homolog subunit 2 (Arabidopsis); COP9 signalosome complex subunit 2; CSN2; JAB1-containing signalosome subunit 2; SGN2; signalosome subunit 2; thyroid receptor interacting protein 15; thyroid receptor-interacting protein 15; TRIP15

**Storage/Stability:** Store at -20°C/1 year

**Form of Antibody:** Rabbit IgG in phosphate buffered saline (without  $Mg^{2+}$  and  $Ca^{2+}$ ), pH 7.4, 150mM NaCl, 0.02% sodium azide and 50% glycerol.

**Immunogen:** The antiserum was produced against

synthesized peptide derived from internal of human COPS2.

**Purification:** The antibody was affinity-purified from rabbit antiserum by affinity-chromatography using epitope-specific immunogen.

**Specificity:** COPS2 antibody detects endogenous levels of total COPS2 protein.

**Reactivity:** Human, Mouse, Rat

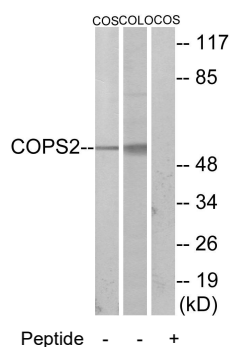
**Applications:** WB: 1:500~1:3000 IF: 1:100~1:500  
ELISA: 1:20000

**References:**

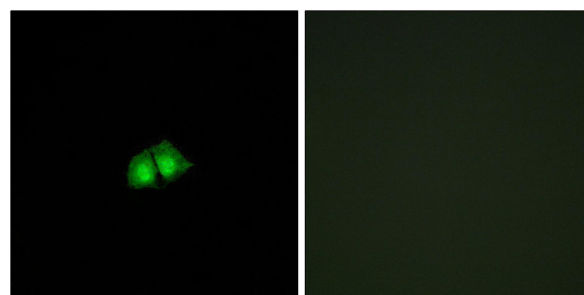
Hu R.-M., Proc. Natl. Acad. Sci. U.S.A. 97:9543-9548(2000).

Lee J.W., Mol. Endocrinol. 9:243-254(1995).

Dressel U., Mol. Cell. Biol. 19:3383-3394(1999).



Western blot analysis of extracts from COS-7 cells and COLO205 cells, using COPS2 antibody.



Immunofluorescence analysis of A549 cells, using COPS2 antibody.