



Web: www.anbobio.com

www.dijibio.com

Order: order@dijibio.com

Tel: +86 519 8805 0026

EDG5 Antibody [#G086]

Catalog Number: G086

Concentration: 1mg/ml

Swiss-Prot No.: O95136

Other Names: Sphingosine 1-phosphate receptor Edg-5; S1P receptor Edg-5; Endothelial differentiation G-protein coupled receptor 5; Sphingosine 1-phosphate receptor 2; S1P2; EDG5

Storage/Stability: Store at -20°C/1 year

Form of Antibody: Rabbit IgG in phosphate buffered saline (without Mg²⁺ and Ca²⁺), pH 7.4, 150mM NaCl, 0.02% sodium azide and 50% glycerol.

Immunogen: The antiserum was produced against synthesized peptide derived from internal of human EDG5.

Purification: The antibody was affinity-purified from rabbit antiserum by affinity-chromatography using epitope-specific immunogen.

Specificity: EDG5 antibody detects endogenous levels of total EDG5 protein.

Reactivity: Human, Mouse, Rat

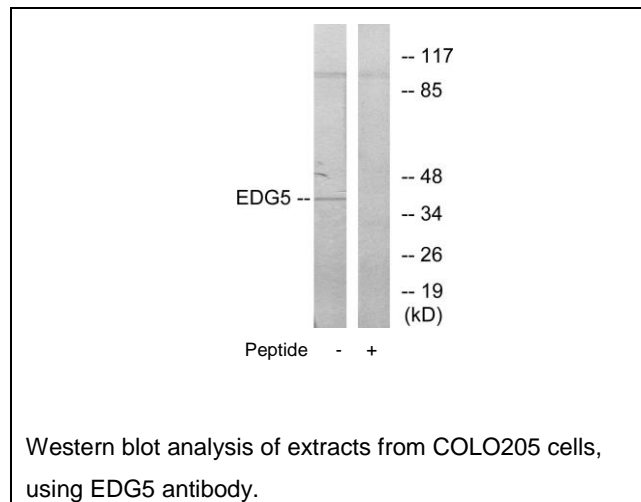
Applications: WB: 1:500~1:3000 ELISA: 1:10000

References:

An S., J. Biol. Chem. 275:288-296(2000).

Kopatz S.A., Submitted (MAR-2003) to the EMBL/GenBank/DDBJ databases.

The MGC Project Team; Genome Res. 14:2121-2127(2004).



For Research Use Only