



Web: www.anbobio.com
www.dijibio.com
 Order: order@dijibio.com
 Tel: (86) 519 8805 0026

ATP7B Antibody [#C10562]

Catalog Number: C10562

Concentration: 1mg/ml

Swiss-Prot No.: P35670

Other Names: Copper-transporting ATPase 2, EC 3.6.3.4, Copper pump 2, Wilson disease-associated protein, WND/140 kDa, ATP7B, PWD, WC1, WND

Storage/Stability: Store at -20°C/1 year

Form of Antibody: Rabbit IgG in phosphate buffered saline (without Mg²⁺ and Ca²⁺), pH 7.4, 150mM NaCl, 0.02% sodium azide and 50% glycerol.

Immunogen: The antiserum was produced against synthesized peptide derived from internal of human ATP7B.

Purification: The antibody was affinity-purified from

rabbit antiserum by affinity-chromatography using epitope-specific immunogen.

Specificity: ATP7B antibody detects endogenous levels of total ATP7B protein.

Reactivity: Human (Identities = 100%, Positives = 100%);
 Mouse (Identities = 100%, Positives = 100%);
 Rat (Identities = 100%, Positives = 100%)

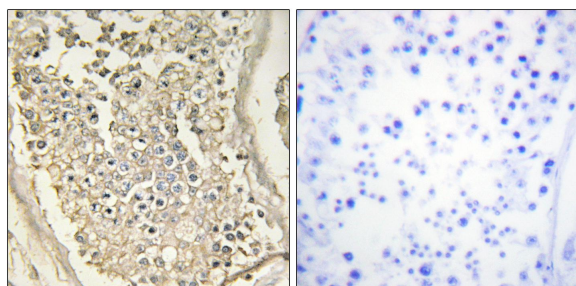
Applications: IHC: 1:50~1:100 IF: 1:100~1:500
 ELISA: 1:1000

References:

Petrukhin K., Hum. Mol. Genet. 3:1647-1656(1994).

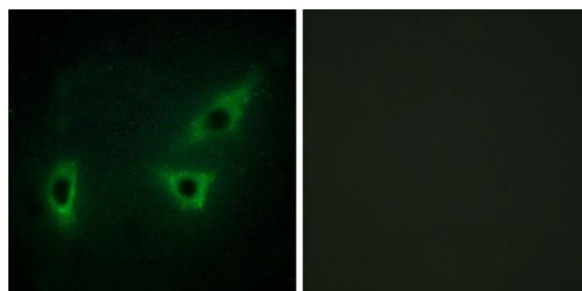
Dunham A., Nature 428:522-528(2004).

Oh W.J., Biochem. Biophys. Res. Commun. 259:206-211(1999).



Peptide - +

Immunohistochemistry analysis of paraffin-embedded human testis tissue, using ATP7B antibody.



Peptide - +

Immunofluorescence analysis of HeLa cells, using ATP7B antibody.