



Web: www.anbobio.com

www.dijibio.com

Order: order@dijibio.com

Tel: (86) 519 8805 0026

CaMKII (Phospho-Thr305) Antibody [#A0005]

Catalog Number: A0005

Concentration: 1mg/ml

Swiss-Prot No.: Q9UQM7

Other Names: CAMK2A, CaM-kinase II alpha chain, CaMK-II alpha subunit, CaMKII-alpha, Calcium/calmodulin-dependent protein kinase type II alpha chain, EC 2.7.11.17, KCC2A, kinase CaMK2-alpha

All Sites: Human: Thr305; Mouse: Thr305; Rat: Thr305

Storage/Stability: Store at -20°C/1 year

Form of Antibody: Rabbit IgG in phosphate buffered saline (without Mg²⁺ and Ca²⁺), pH 7.4, 150mM NaCl, 0.02% sodium azide and 50% glycerol.

Immunogen: The antiserum was produced against synthesized phosphopeptide derived from human CaMKII around the phosphorylation site of threonine 305 (I-L-T^P-T-M).

Purification: The antibody was affinity-purified from rabbit antiserum by affinity-chromatography using epitope-specific phosphopeptide. The antibody against non-phosphopeptide was removed by chromatography using non-phosphopeptide corresponding to the phosphorylation site.

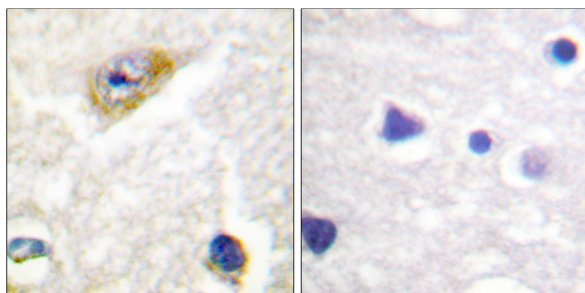
Specificity: CaMKII (Phospho-Thr305) antibody detects endogenous levels of CaMKII only when phosphorylated at threonine 305.

Reactivity: Human, Mouse, Rat

Applications: WB: 1:500~1:3000 IHC: 1:50~1:100
ELISA: 1:5000

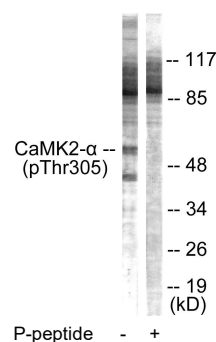
References:

Carl W. Tong, J. Physiol., Aug 2004; 558: 927 - 941.
Pierre R, J. Biol. Chem., Sep 1997; 272: 24133.
Daliang Wang, PNAS, Jun 1998; 95: 7133.



P-peptide - +

Immunohistochemical analysis of paraffin-embedded human brain tissue using CaMKII (Phospho-Thr305) Antibody.



Western blot analysis of extracts from NIH/3T3 cells, using CaMKII (Phospho-Thr305) Antibody.